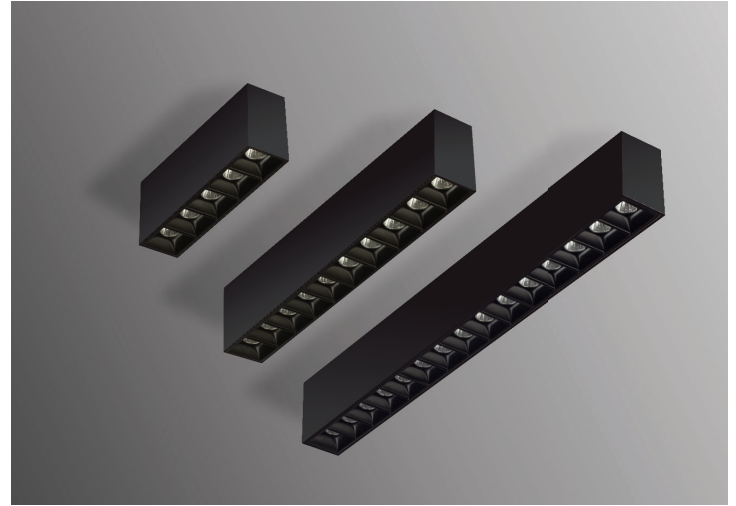
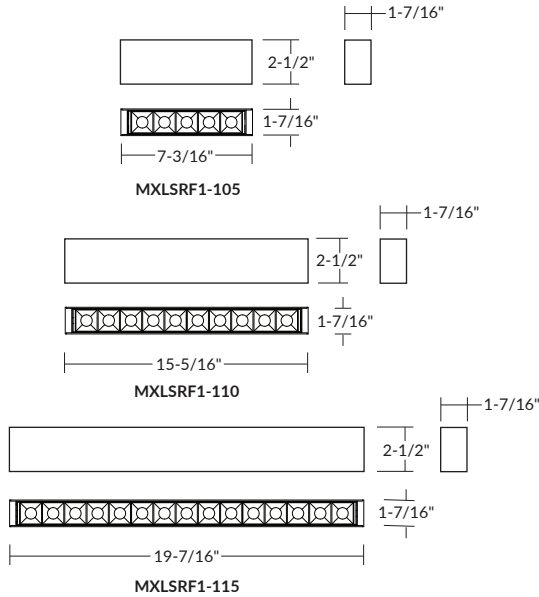


**MXLSRF1-105/1-110/1-115**  
**SURFACE MOUNT, MINIATURE LINEAR LED**

- Competitively priced surface mount modular design
- 2700K, 3000K, 3500K, and 4000K CCT
- 1000-3000 delivered lumens (11W-33W)
- Dimming down to 1%\*

Matrix linear surface mount downlights are an aesthetic and performance upgrade from traditional linear fluorescent lighting with their high efficiency, and visual comfort. Matrix is available in 5 to 15 cell configurations to bring elegance and flexibility in a variety of lighting applications.



MXLSRF1-105/MXLSRF1-110/MXLSRF1-115 (Surface Mount) Downlight

**Ordering Example: MXLSRF1-115BUE-D10-B30-T27-RMT-EC61**

**MXLSRF1-115**

Driver/Frame	Cell Finish	Housing Finish	Dimming	Beam Spread	CCT	Power Feed Method
<b>Driver/Frame</b>	<b>Cell Finish</b>	<b>Housing Finish</b>	<b>Dimming</b>	<b>Beam Spread</b>		
5-Cell, 1000lm (11W)	<b>MXLSRF1-105</b>	Black <b>B</b> White <b>W</b>	Black <b>B</b> White <b>W</b>	0-10V Dimming (120V/277V)	<b>UE-D10</b>	15° Narrow Spot <b>-B15</b> 30° Narrow Flood <b>-B30</b> 40° Flood <b>-B40</b>
10-Cell, 2000lm (22W)	<b>MXLSRF1-110</b>	Silver <b>S</b> Custom <b>CSTM</b>		2-Wire INC/ 3-Wire ELV (120V)	<b>-DIN*</b>	
15-Cell, 3000lm (33W)	<b>MXLSRF1-115</b>					

CCT	Power Feed Method
2700K, 90 CRI <b>-T27</b>	End Cap Powered (Remote) <b>-RMT-EC61</b>
3000K, 90 CRI <b>-T30</b>	
3500K, 90 CRI <b>-T35</b>	120V/277V (Integral with Conduit Entry) <b>-JBX-96UE</b>
4000K, 90 CRI <b>-T40</b>	

\*Tested with Lutron Skylark SELV-300P & Maestro MAELV-600 Dimmers.

2022.10.31

## SPECIFICATION

### Applications

Matrix linear surface mount downlights are an aesthetic and performance upgrade from traditional linear fluorescent lighting with their high efficiency, and visual comfort. Matrix is available in 5 to 15 cell configurations to bring elegance and flexibility in a variety of lighting applications.

### Housing

Extruded aluminum housing designed to secure to sheetrock wood or concrete ceiling surfaces. Available in black or white finish. (-CH) Chicago Plenum option is available. Contact factory. **Housing is not insulation contact (IC) rated.**

### Reflectors

A series of 1.4" square cells hold single LED diodes that provide excellent visual cut off with a very comfortable Unified Glare Rating (UGR) of less than 10. Cell Available in black, white or silver finish. Custom colors are available. Contact factory.

### LED Details

Color Temperature - Osram LEDs are binned to 3-step MacAdam ellipses within the ANSI C78 377A standard for color temperature and chromaticity ranges light binning allowance. 90 CRI standard.

Lumen Maintenance - Minimum 50,000 hours L70 life based on ANSI TM-21 calculations from LM80 standardized test results.

### Dimming Details

Driver - Externally mounted. Highly efficient 24V DC with a power factor up to 0.99. 120V/277V AC for any residential or commercial applications.

Dimming - Superior PWM dimming technology compatible with many models of Triac, ELV, MLV, forward and reverse phase dimmers, and on/off switches.

(UE-D10) 0-10V dimming option dims down to 1% and works with most 120V/277V 5-wire, 0-10V dimmers.

(-DIN) dimming option smoothly dims down to 10% of initial light output with flicker-free performance when tested with Lutron Skylark SELV-300P and Maestro MAELV-600 dimmers. Works with standard 120V incandescent dimmers.

Thermal Management - Effective thermal management facilitated by integral extruded aluminum heat sink design for maximum heat dissipation to provide long LED life.

### Power Feed Methods

End Cap Powered Remote (-RMT-EC61). 120V/277V 96W On-Board Integral Power Supply (-JBX-96UE)

### Certifications and Listings

ETL/cETL listed to UL1598 and UL8750. Suitable for dry and damp locations. NYC approved: Calendar #41937.

### Warranty

Covered by a 5-Year Warranty to be free of defects in materials and craftsmanship. Recommended for applications where ambient temperatures do not exceed 35°C. Installations exceeding this temperature will result in reduced LED lamp life and a voided warranty.