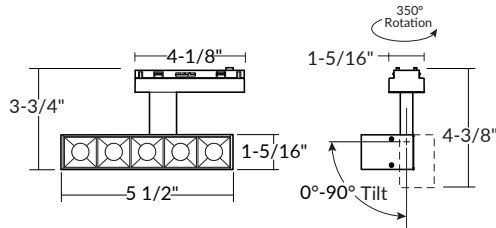
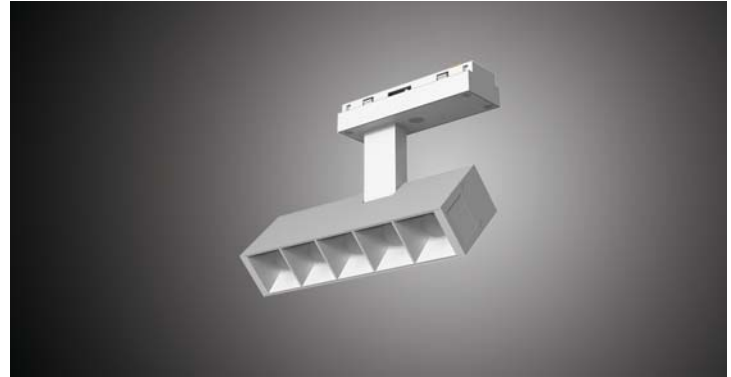


MM2J-ADJUSTABLE WALL WASH ILLUMINATED MODULE

- Adjustable wall wash tilts from 0° to 90°
- Multiple beam spread options
- Minimal 1" square



The ModuLED MM2J adjustable wall wash tilts from 0° to 90° for easy adjustability, excellent visual cutoff, and maximum control of light distribution on vertical wall surfaces. Offered in a variety of color temperatures and beam spreads, there is sure to be a wall wash that is perfect for your space.



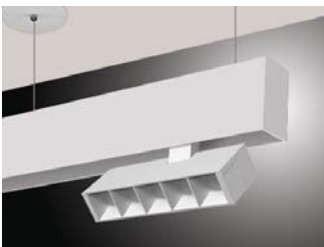
Ordering Example: MM2JB-B40-T30

MM2J

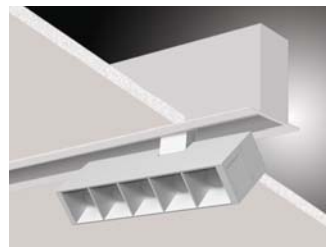
Length Finish Lumens CCT

Length	Finish	Beam Spread	CCT
6", 1000lm (11W) MM2J	Black B	15° Narrow Spot -B15	2700K, 90 CRI -T27
	White W	40° Flood -B40	3000K, 90 CRI -T30
		60° Wide Flood -B60	3500K, 90 CRI -T35
		30° x 60° Asymmetric -B3060	4000K, 90 CRI -T40*

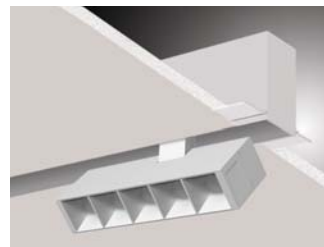
COMPATIBLE MOUNTING & POWER SUPPLIES¹



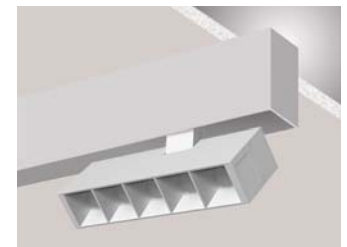
MTPDN
 1.5" Pendant
 Modular Slot
moduled.io/MTPDN



MTRFG
 1.5" Recessed Flanged
 Modular Slot
moduled.io/MTRFG



MTRTS
 1.5" Recessed Trimless
 Modular Slot
moduled.io/MTRTS



MTSRF
 1.5" Surface
 Modular Slot
moduled.io/MTSRF

*Special order item. Extended lead time.

¹Refer to Modular Slot Specification Sheets for more complete information.

SPECIFICATION

Applications

The ModuLED MM2J adjustable wall wash tilts from 0° to 90° for easy adjustability, excellent visual cutoff, and maximum control of light distribution on vertical wall surfaces. Offered in a variety of color temperatures and beam spreads, there is sure to be a wall wash that is perfect for your space.

Housing

Housing and arm in extruded aluminum with black or white high quality powder coat finish for maximum durability. Housing pivots 0° to 90° from arm.

Reflector

A series of 1" square cells holding a single LED emitter with a choice of precise optics and subtle aperture treatments providing excellent visual cut off with a very comfortable Unified Glare Rating (UGR) of less than 10.

Mounting

Illuminated Module fits into Pendant (MTPDN), Recessed Flanged (MTRFG), Recessed Trimless (MTRTS) and Surface (MTRSF) modular slot systems.

LED Details

Color Temperature - LEDs binned to 3-step MacAdam ellipses within the ANSI C78 377A standard for color temperature and chromaticity ranges light binning allowance. 90 CRI standard.

Lumen Maintenance - Minimum 50,000 hours L70 life based on ANSI TM-21 calculations from LM80 standardized test results.

Electrical Components

Thermal Management - Effective thermal management facilitated by integral extruded aluminum heat sink design for maximum heat dissipation to provide long LED life.

Driver - Highly efficient 24V DC with a power factor up to 0.99. 120V/277V AC for any residential or commercial applications.

Dimming - Superior PWM dimming technology compatible with many models of Triac, ELV, and 0-10V forward and reverse phase dimmers, and on/off switches. All models under 24V/96W are Class 2 compliant, making them safe and inspection-ready. They are derated, which means they can be loaded to maximum wattage capacity, with a minimum load of only 10%.

Certifications and Listings

ETL/cETL listed to UL1598 and UL8750. Suitable for dry and damp locations. NYC approved: Calendar #41937.

California Energy Commission (CEC) Approved as High Efficacy under Title 24/JA8: #MM2J

Warranty

Covered by a 5 Year Warranty to be free of defects in materials and craftsmanship. Recommended for applications where ambient temperatures do not exceed 35°C. Installations exceeding this temperature will result in reduced LED lamp life and a voided warranty.

Title 24/JA8 Compliant



MM2J

PHOTOMETRY

MM2JB (6" L, 1000lm, 11W, 15°)

MM2JB-B15-T30

6", 1000lm, 15°, 3000K, CRI: 90

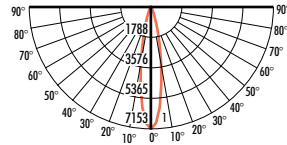
System Power (Watts)	9.8W
Test Date	5/14/2019
Beam Angle (50%)	19.6°
Field Angle (10%)	39.7°
Color Temperature	3161K
CRI:	94.5
R9 Value	63.3
Lumens Delivered (lm)	1160.8
CBCP	7153
Volts:	24V DC

MULTIPLIERS

CCT

4000K :	1.07
3500K :	1.00
3000K :	1.00
2700K :	1.00

CANDELA TABULATION



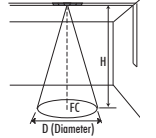
LUMINANCE DATA (cd/sq.m)

Angle in Degrees	Average 0-Deg	Average 45-Deg	Average 90-Deg
45	1543	1720	3219
55	316	357	759
65	156	179	439
75	162	188	552
85	204	241	908

FOOTCANDLE DISTRIBUTION

Recessed Track (MTRFG, MTRTS)

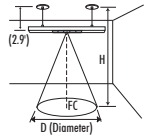
Ceiling HT FT (H)	Beam Dia. (D)	Foot Candle (FC)
10.0'	3.5'	71.5
12.0'	4.1'	49.7
14.0'	4.8'	36.5
16.0'	5.5'	27.9
18.0'	6.2'	22.1



Pendant Track (MTPDN) with 32" cable

Ceiling HT FT (H)	Beam Dia. (D)	Foot Candle (FC)
10.0'	2.5'	140.8
12.0'	3.2'	85.9
14.0'	3.8'	57.8
16.0'	4.5'	41.5
18.0'	5.2'	31.3

(fixture 2.9 ft below housing)



MM2JB (6" L, 1000lm, 11W, 40°)

MM2JB-B40-T30

6", 1000lm, 40°, 3000K, CRI: 90

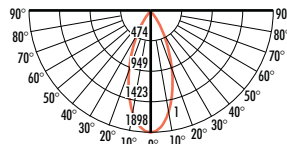
System Power (Watts)	9.8W
Test Date	5/15/2019
Beam Angle (50%)	41.1°
Field Angle (10%)	73.5°
Color Temperature	3111K
CRI:	94.4
R9 Value	62.5
Lumens Delivered (lm)	1042.4
CBCP	1898
Volts:	24V DC

MULTIPLIERS

CCT

4000K :	1.07
3500K :	1.00
3000K :	1.00
2700K :	1.00

CANDELA TABULATION



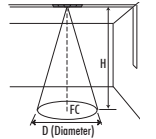
LUMINANCE DATA (cd/sq.m)

Angle in Degrees	Average 0-Deg	Average 45-Deg	Average 90-Deg
45	5082	5666	10603
55	566	640	1360
65	166	190	467
75	174	203	595
85	194	229	865

FOOTCANDLE DISTRIBUTION

Recessed Track (MTRFG, MTRTS)

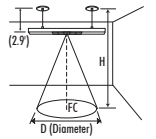
Ceiling HT FT (H)	Beam Dia. (D)	Foot Candle (FC)
10.0'	7.5'	19.0
12.0'	9.0'	13.2
14.0'	10.5'	9.7
16.0'	12.0'	7.4
18.0'	13.5'	5.9



Pendant Track (MTPDN) with 32" cable

Ceiling HT FT (H)	Beam Dia. (D)	Foot Candle (FC)
10.0'	5.3'	37.4
12.0'	6.8'	22.8
14.0'	8.3'	15.3
16.0'	9.8'	11.0
18.0'	11.3'	8.3

(fixture 2.9 ft below housing)



MM2JB (6" L, 1000lm, 11W, 60°)

MM2JB-B60-T30

6", 1000lm, 60°, 3000K, CRI: 90

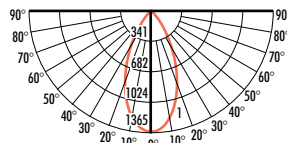
System Power (Watts)	9.8W
Test Date	5/14/2019
Beam Angle (50%)	48.3°
Field Angle (10%)	80.8°
Color Temperature	3123K
CRI:	94.5
R9 Value	62.9
Lumens Delivered (lm)	943.4
CBCP	1365
Volts:	24V DC

MULTIPLIERS

CCT

4000K :	1.07
3500K :	1.00
3000K :	1.00
2700K :	1.00

CANDELA TABULATION



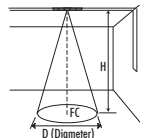
LUMINANCE DATA (cd/sq.m)

Angle in Degrees	Average 0-Deg	Average 45-Deg	Average 90-Deg
45	6434	7174	13425
55	574	649	1379
65	133	152	373
75	151	176	517
85	129	153	576

FOOTCANDLE DISTRIBUTION

Recessed Track (MTRFG, MTRTS)

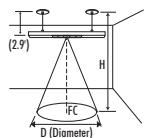
Ceiling HT FT (H)	Beam Dia. (D)	Foot Candle (FC)
10.0'	9.0'	13.7
12.0'	10.8'	9.5
14.0'	12.6'	7.0
16.0'	14.3'	5.3
18.0'	16.1'	4.2



Pendant Track (MTPDN) with 32" cable

Ceiling HT FT (H)	Beam Dia. (D)	Foot Candle (FC)
10.0'	6.4'	26.9
12.0'	8.2'	16.4
14.0'	10.0'	11.0
16.0'	11.8'	7.9
18.0'	13.6'	6.0

(fixture 2.9 ft below housing)



MM2JB (6" L, 1000lm, 11W, Asymmetric)

MM2JB-B3090-T30

6", 1000lm, Asymmetric, 3000K, CRI: 90

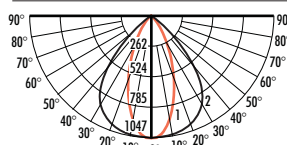
System Power (Watts)	9.8W
Test Date	5/14/2019
Vert. Beam Angle (50%) (W)	42.6°
Horiz'l Beam Angle (50%) (L)	82.6°
Vert. Field Angle (50%) (W)	78.4°
Horiz'l Field Angle (50%) (L)	105.8°
Color Temperature	3120K
CRI:	94.4
R9 Value	62.7
Lumens Delivered (lm)	1128.6
CBCP	1047
Volts:	24V DC

MULTIPLIERS

CCT

4000K :	1.07
3500K :	1.00
3000K :	1.00
2700K :	1.00

CANDELA TABULATION



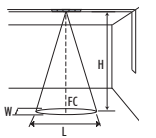
LUMINANCE DATA (cd/sq.m)

Angle in Degrees	Average 0-Deg	Average 45-Deg	Average 90-Deg
45	5079	26301	87833
55	653	3091	11565
65	166	271	862
75	162	179	494
85	178	192	653

FOOTCANDLE DISTRIBUTION

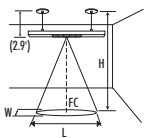
Recessed Track (MTRFG, MTRTS)

Ceiling HT FT (H)	Vert. Beam Angle (50%) (W)	Hor. Beam Angle (50%) (L)	Foot Candle (FC)
10.0'	7.8'	17.6'	10.5
12.0'	9.4'	21.1'	7.3
14.0'	10.9'	24.6'	5.3
16.0'	12.5'	28.1'	4.1
18.0'	14.0'	31.6'	3.2



Pendant Track (MTPDN) with 32" cable

Ceiling HT FT (H)	Vert. Beam Angle (50%) (W)	Hor. Beam Angle (50%) (L)	Foot Candle (FC)
10.0'	5.6'	12.5'	20.6
12.0'	7.1'	16.0'	12.6
14.0'	8.7'	19.5'	8.5
16.0'	10.2'	23.1'	6.1
18.0'	11.8'	26.6'	4.6



2019.06.11